



Chatham Docks Presentation

Peel L&P

Peel L&P operates across a diverse range of markets – from workspace, residential, development land, industrial and distribution, retail, leisure, energy and environmental to create mixed-use destinations.

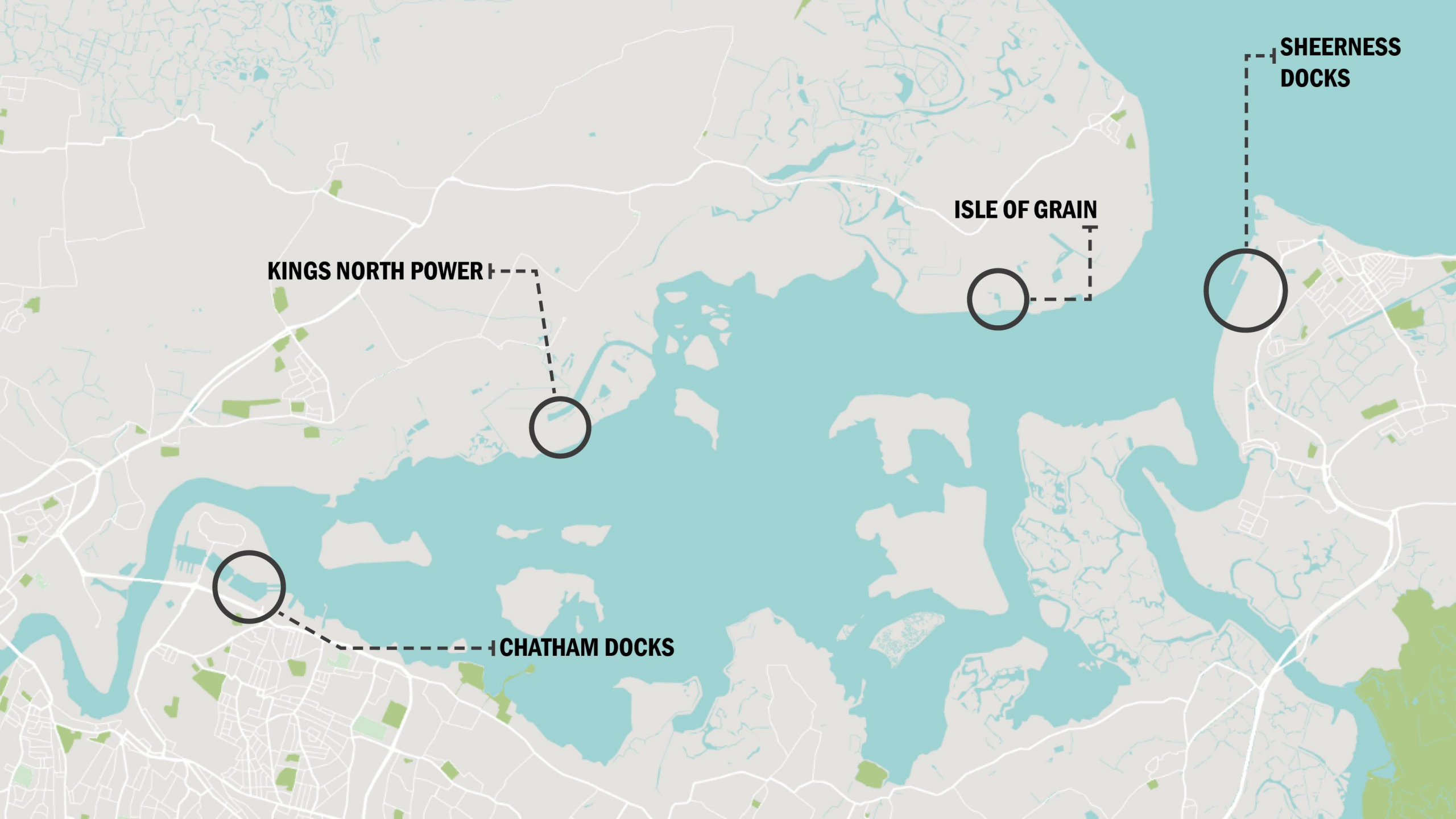
Realising possibility

We devote our energy to accomplishing great things; not for their own sake, or ours, but for those who come after; today, tomorrow and for generations to come.

Our ambitions are for a more prosperous, sustainable future for all; where people and places are matched with the opportunity to be the very best they can be.

We see possibility. We deliver transformation.



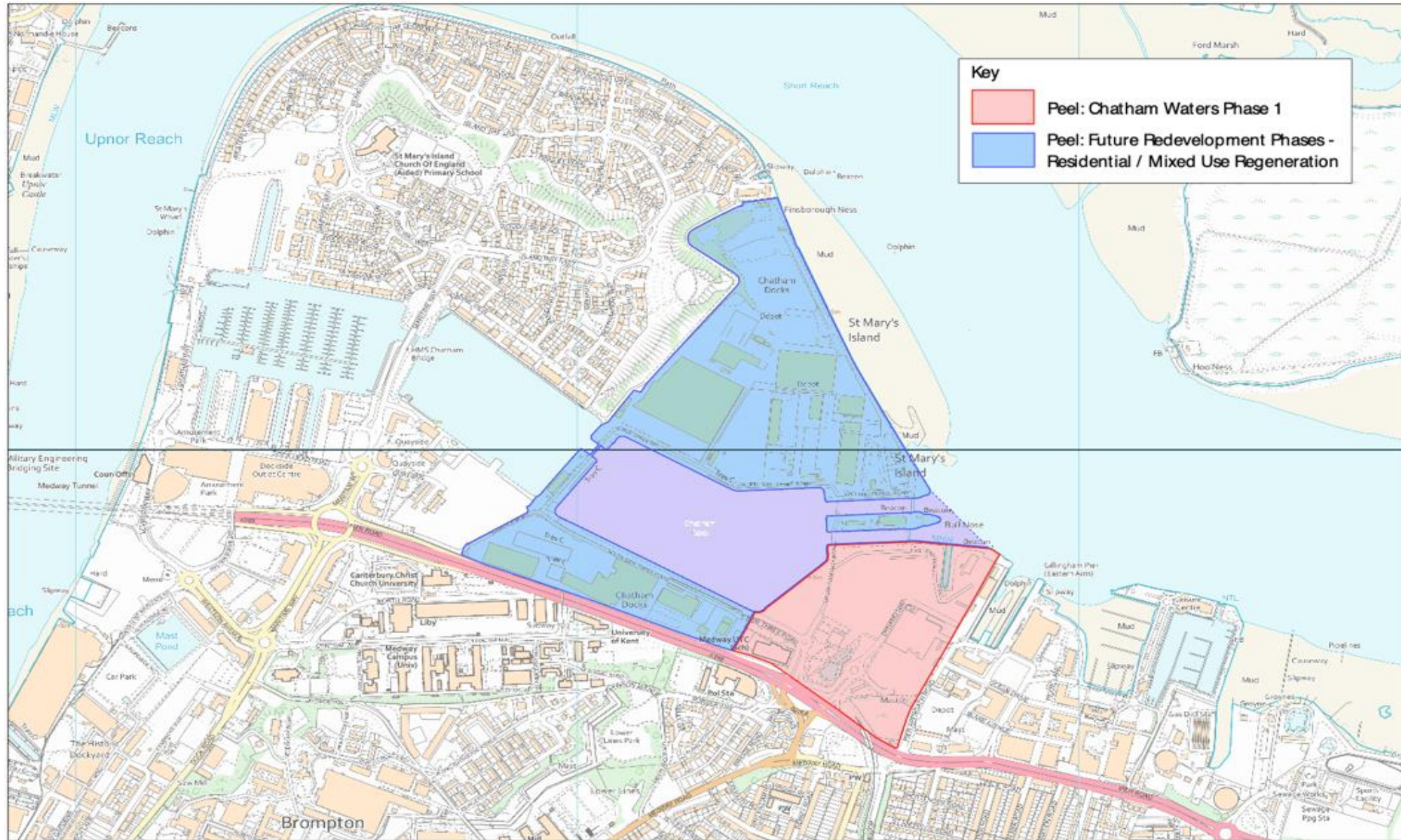


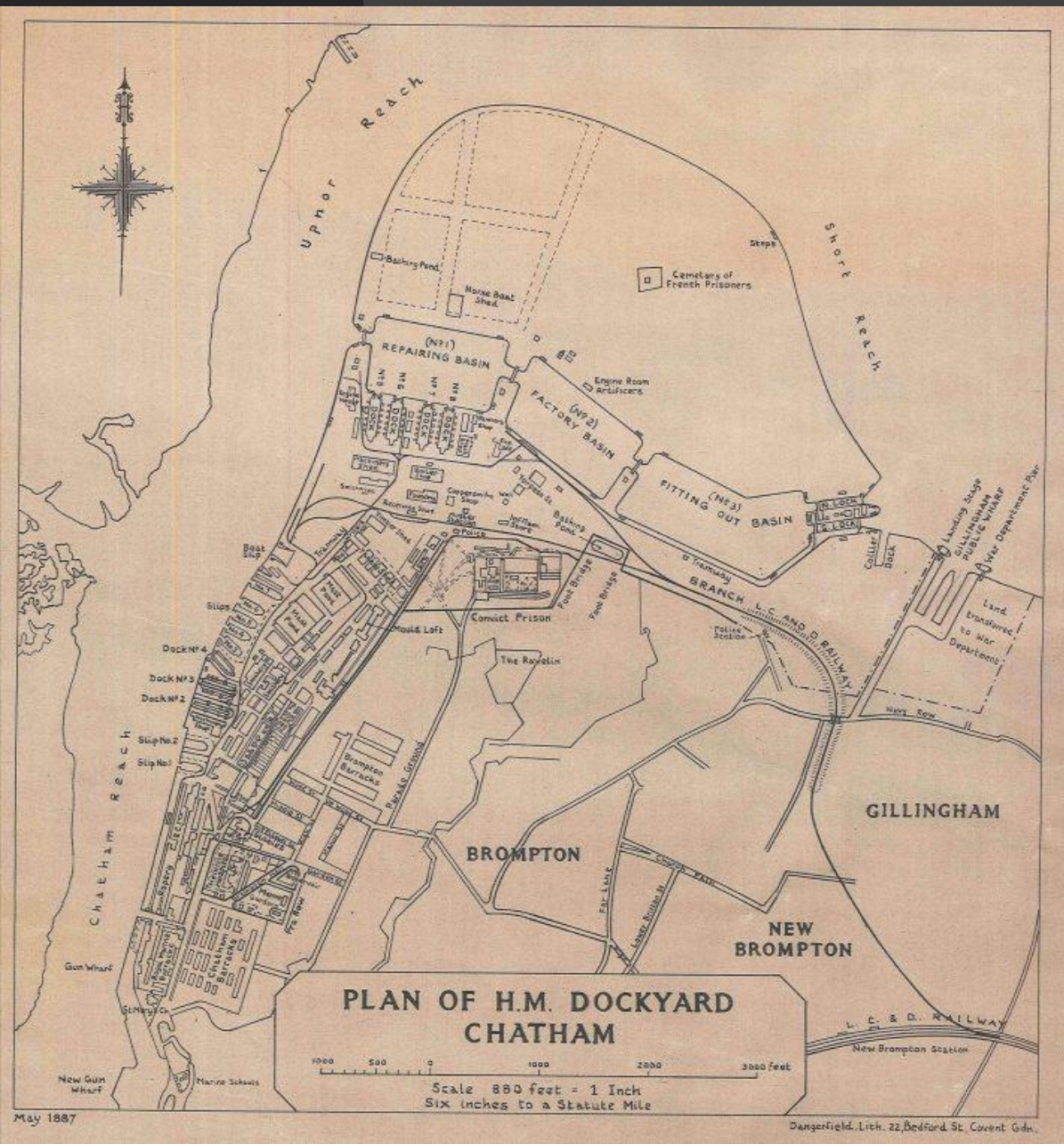
KINGS NORTH POWER

ISLE OF GRAIN

SHEERNES DOCKS

CHATHAM DOCKS













Masterplan









**400
HOMES**

UNDER CONSTRUCTION



A FURTHER
**550
HOMES**
TO BE BUILT
IN THE NEXT
NEXT 5 YEARS

**PHASE ONE
£50 MILLION
INVESTMENT**

INCLUDING ASDA
, UTC AND MARSTON'S

A FURTHER
£600M
INVESTMENT
IN THE PIPELINE

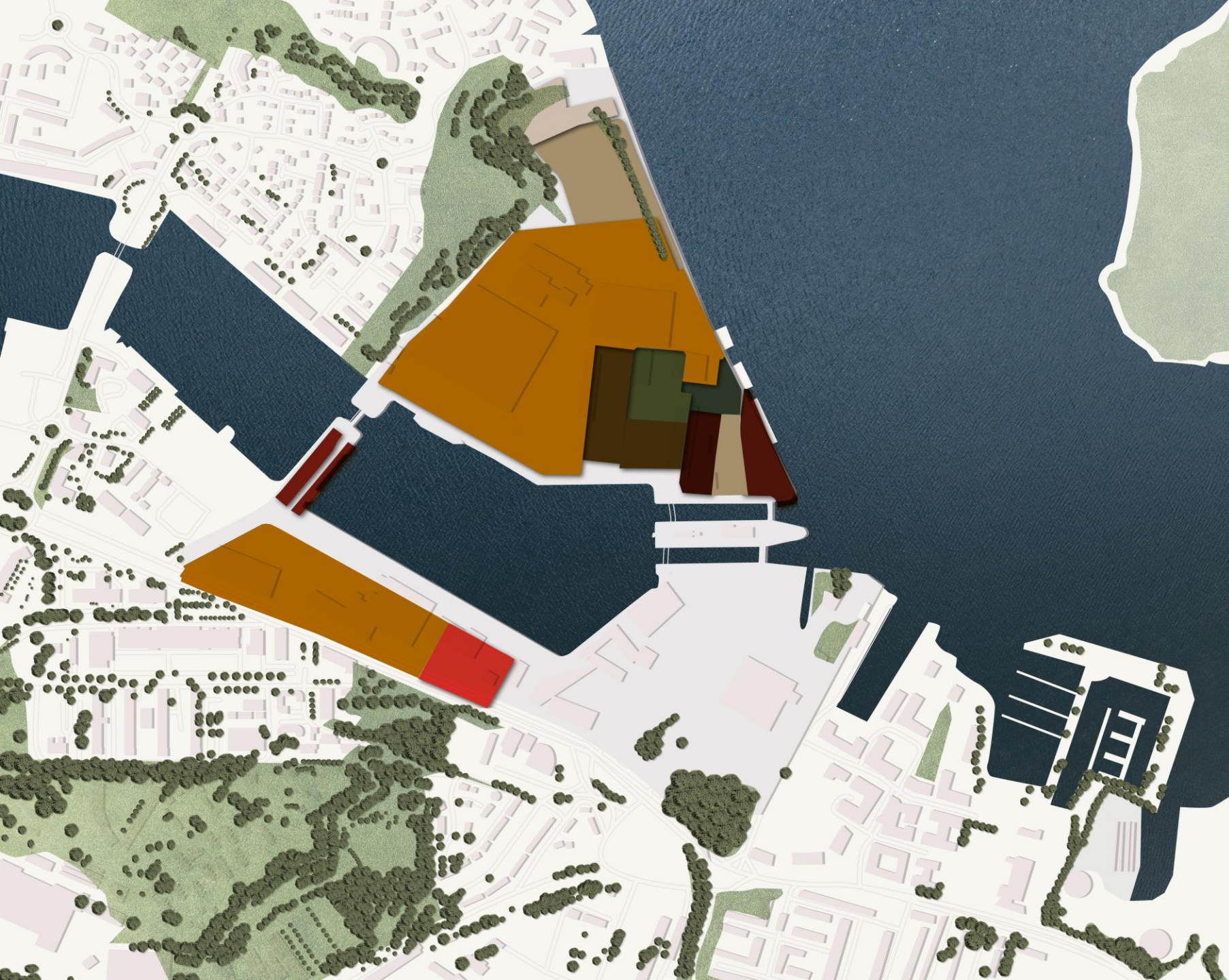
£7 MILLION
PREVIOUSLY INVESTED
TO REFURBISH THE LOCK GATES
EXTENDING THEIR
LIFE SPAN UP TO 2025

NEW
**WATERFRONT
WALKWAY**
AND
**GREEN
SPACES**

SIGNIFICANT
NUMBERS OF
CONSTRUCTION
JOBS

750
FULL
TIME
JOBS
CREATED
SO FAR

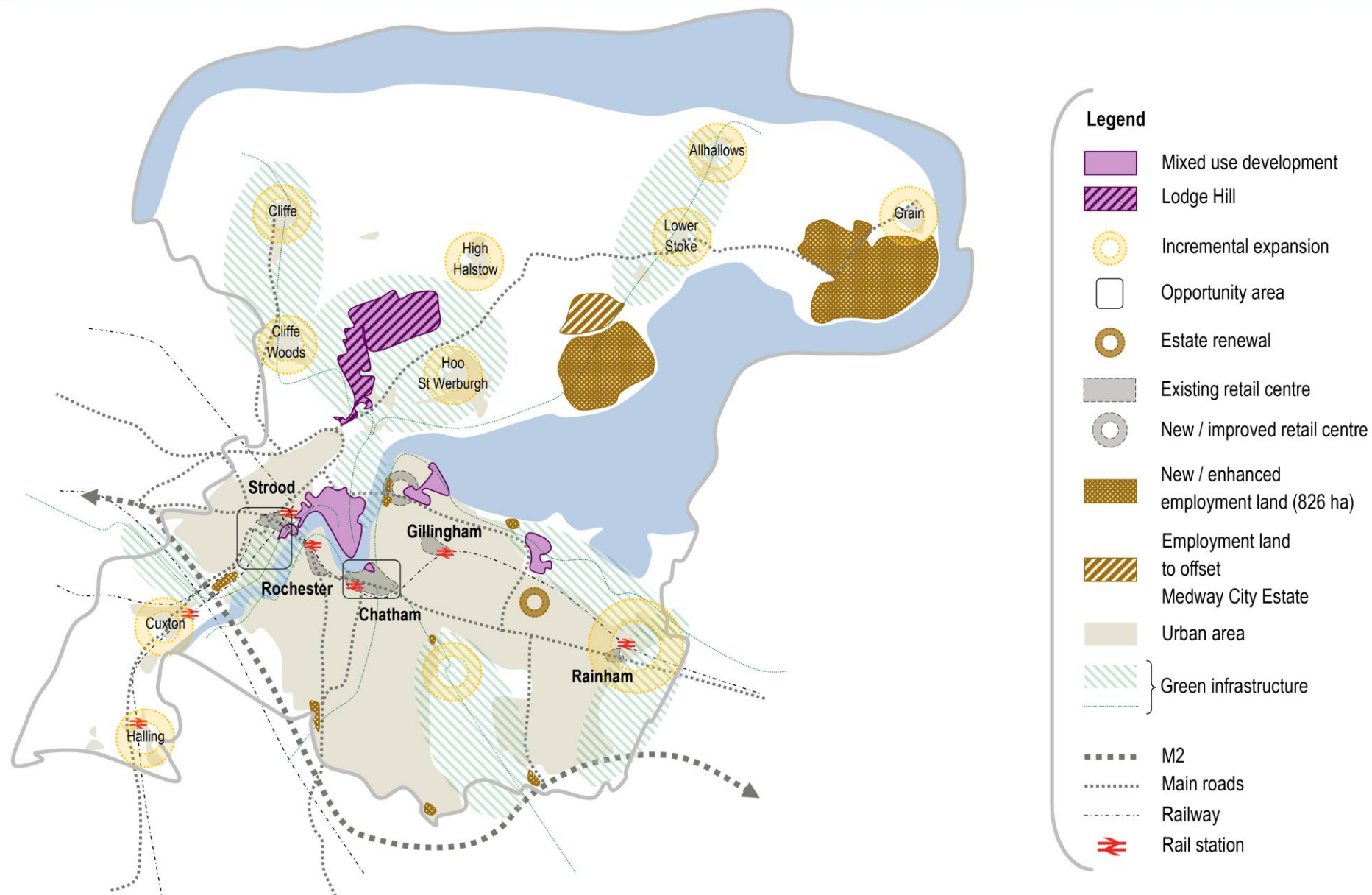
INCLUDING AFFORDABLE
230 HOMES AND
NEW CARE HOME



2020

- Land to be reclaimed
- Downtowns
- Arcelor Mittal Total Ship Service
- Hy Ter
- DSJV
- MCS
- Chatham Freight
- Przemyslaw Szykowski
- EAPL
- Paragon

Appendix 1B – Maximising the potential of urban regeneration





Housing

- 28,611 homes needed over plan period
- 1,683 *every year* to 2037
- Only 3 years available supply



Employment

- 90Ha of employment land needed
- Over 1,300Ha available supply

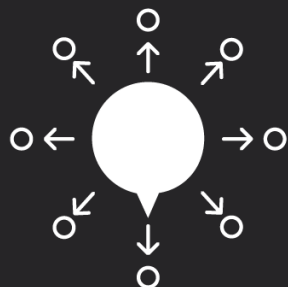




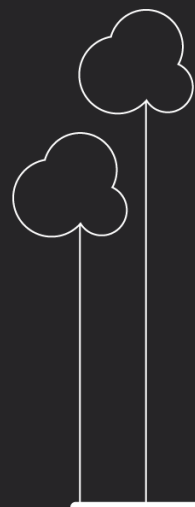


**4,000
HOMES TO
BE BUILT**

**2,000
JOBS TO BE
CREATED**



**2KM OF NEW
COAST PATH,
CONNECTING
ST MARY'S ISLAND
AND VICTORY PIER**



**NEW GREEN
SPACES** FOR
COMMUNITY
ACTIVITIES,
**RELAXING,
EXERCISE &
LEARNING.**

**IMPROVED
ENVIRONMENT &
SUSTAINABILITY**



**SIGNIFICANT  REDUCTION IN
HGV TRAFFIC**

**IMPROVED QUALITY
OF LIVING,**
★ ★ ★ ★ ★
AS INDUSTRIAL USE
WILL BE REPLACED

PEEL L&P WILL MAKE
**IMPROVEMENTS TO
FLOOD DEFENCES &**



REMEDiate
CONTAMINATED LAND



**POTENTIAL TO DELIVER CYCLE
& PEDESTRIAN CORRIDOR**



ALONG OLD RAILWAY LINE TO LINK
TO GILLINGHAM TRAIN STATION





